

Shmelov, Denis
 Fishbein, Alexander

Chicago Open
[Admin, ICA]

26.05.2013

E94

This lesson will be about how to defend bad (or even losing) positions. We will also talk about how psychology can lead directly to mistakes. In difficult positions, psychology can be your best resource, and during the presentation I will discuss some intangibles you can use to turn the game from a loss to a win. So, if you come to the lecture, you may become exposed to some trade secrets that are not discussed in books

1.d4 Nf6 2.c4 g6 3.Nc3 Bg7 4.e4 d6 5.Nf3 0-0 6.Be2 e5 7.0-0 exd4 8.Nxd4 c6 9.f3 Nbd7 10.Be3 d5 11.exd5 cxd5 12.Ndb5 a6 13.Nd6 Qe7 14.Bf4 Nb6 15.c5 Nh5 I was under the illusion that Black is better and underestimated his next move.

[better 15...Nbd7 16.Re1 (16.b4 a5) 16...Nxc5 17.Nxd5 Nxd5 18.Qxd5 Ne6 19.Bc4]

16.Bc1 Be6 17.f4 d4? I saw that after 17...Nf6 White has 18.f5 and seeing that I was worse there, played the other move, still searching for ghosts.

[17...Nf6 18.f5 gxf5 19.Bg5 (19.Nxf5 Bxf5 20.Rxf5 Qxc5+ 21.Kh1 Rae8) 19...h6 20.Bh4 Qd7 21.Bxf6 Bxf6 22.Bd3 Qc6]

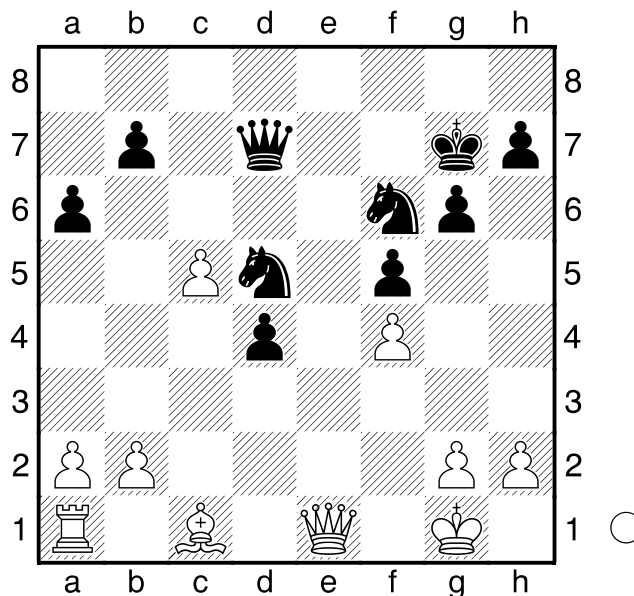
18.Nce4 Now White is probably winning **f5 19.Ng5 Bd5 20.Bf3 Nf6 21.Re1 Qd7 22.Bxd5+**

[22.Re5 Qc6 23.Qxd4 Bxf3 24.gxf3]

22...Nbx d5 23.Ne6 Rfe8

[23...b6 24.b4 Nxb4 25.Nxf8 Bxf8 26.Qxd4 bxc5 27.Qc4+ Kg7 28.Bb2

Bxd6 29.Rad1 Nc6 30.Be5]
24.Nxe8 Rxe8 25.Nxg7 Rxe1+
 [25...Kxg7 26.Re5 Ne7]
26.Qxe1 Kxg7 Diagram



Black has lost the exchange, but has a little positional compensation in his strong Knights. The psychology of the game has also changed: White has to focus and find the exact continuation, as his pieces are not developed and Black has a passed pawn. It is often difficult for the stronger side to refocus and defend against threats, after having the initiative earlier. This is the right time for Black to look for traps to set for his opponent **27.Qe5?** A serious mistake [\triangleleft 27.Qd2 Nc7 28.b4 Ne6 29.Bb2 Kf7 30.Rd1]

27...Nb4! 28.Bd2
[28.b3 Nd3 (28...Nc6 29.Qe2) 29.Qe2 Nxc1 30.Rxc1 d3 31.Qe5 d2 32.Rd1 Kf7 33.Qe3 Ne4]

28...Nc6 29.Qd6?? White lost his sense of danger. This is common when you've had an advantage the whole game.
[\triangleleft 29.Qe1 Ne4 30.b4 Qd5]

29...Qf7! The queen is trapped and the
game is over **30.Re1 Ne4 31.Rxe4**
fxe4 32.b3 e3 33.Bc1

[33.Be1 Qf5]

33...Qf5

0-1