

## by GM Ilya Gurevich

The secrets of the Schliemann Defense  
(Jaenisch Gambit)

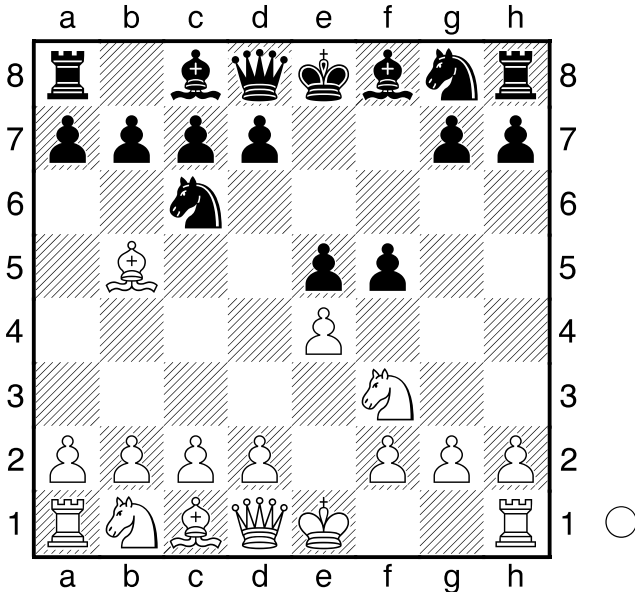
Open Kings!

Queen Sacs!

Discovered Checks!

Even a perpetual!

**1.e4 e5 2.Nf3 Nc6 3.Bb5 f5** Diagram



### The Schliemann Defense **4.d3**

[ 4.exf5 e4

**A)** 5.Bxc6 dxc6 6.Ne5 ( 6.Qe2 Transposes ) 6...Bxf5 ;

**B)** 5.Qe2 Qe7 6.Bxc6 dxc6 7.Nd4 Qe5 8.Nf3 Qe7 9.Nd4 Qe5 ( 9...c5?! 10.Ne6 Bxe6 11.fxe6 Qxe6 12.Nc3 Leaves Black with a weak e4-pawn ) 10.Nf3 Qe7 1/2-1/2 ]

[ 4.Bxc6 dxc6 5.Nc3 Nf6 6.Qe2 fxe4 7.Nxe4 Bg4 8.h3 Bxf3 9.Qxf3 Nxe4 10.Qxe4 Qd5 11.d3 Bc5 12.Be3 Qxe4 13.dxe4 Bxe3 14.fxe3= ]

[ 4.d4 fxe4 5.Nxe5 ( 5.Bxc6 dxc6 6.Nxe5 Qh4 ) 5...Nxe5 6.dxe5 c6 7.Nc3 ( 7.Be2? Qa5+ & 8...Qa5xe5 leaves Black with a clear extra pawn ) 7...cxb5 8.Nxe4 d5! 9.exd6 Nf6 10.Qd4 Qd7! 11.0-0 ( 11.Nxf6+ gxf6

12.Qxf6 Qe6+! ) 11...Nxe4 ]

[ 4.Nc3 fxe4 5.Nxe4

**A)** 5...Nf6 6.Qe2 ( 6.Nxf6+ gxf6 )

6...d5 7.Nxf6+ gxf6 8.d4 Bg7

9.dxe5 0-0 10.Bxc6 bxc6 11.e6

Re8 12.0-0 Rxe6 ;

**B)** 5...d5 6.Nxe5 ( 6.Ng3 Bg4 7.h3 Bxf3 8.Qxf3 Nf6= ) 6...dxe4 7.Nxc6

**B1)** 7...Qd5 Inferior 8.c4 ( 8.Nd4+

c6 ; 8.Nxa7+ Bd7 9.Bxd7+ Kxd7

10.Qg4+ Kd8 ) 8...Qd6

**B1a)** 9.Nxa7+ Bd7 10.Bxd7+

Qxd7 11.Qh5+ g6 12.Qe5+ Kf7

13.Nb5 ( 13.Qxh8? Nf6+

followed by ...Bf8-g7 picking up

the White queen ) 13...c6 14.Qd4

( 14.Qc7? Qxc7 15.Nxc7 Rc8+

Picking up the White knight on

c7 ) 14...Qe7 15.Qxh8 Nf6

16.b3 Rd8 17.Bb2 Bg7 18.Ba3

Qd7 19.Nd6+ Ke6 20.Nxb7 ;

**B1b)** 9.Qh5+ g6 10.Qe5+

( 10.Nxa7+ Bd7 11.Bxd7+ )

10...Qxe5 11.Nxe5+ c6 12.Ba4

( 12.Nxc6? a6 13.Ba4 Bd7+ )

12...Bg7 13.d4 exd3 14.Nxd3

( 14.0-0 Bxe5 15.Re1 ) 14...Bf5

15.Nc5 0-0-0 16.0-0 Nf6 ;

**B2)** 7...Qg5! 8.Qe2 Nf6 9.f4 Qxf4

( 9...Qh4+? 10.g3 Qh3 11.Ne5+

c6 12.Bc4 Bc5 13.d3 Ng4 14.Nf7

Bf2+ 15.Kd1 e3 16.Qf3 Nf6 17.f5

Rf8 18.Bxe3 ) 10.Ne5+ c6 11.d4

Qh4+ 12.g3 Qh3 13.Bc4 Be6

& ...0-0-0 ]

**4...fxe4 5.dxe4 Nf6 6.0-0 Bc5 7.Qd3 Nd4**

[ 7...d6 8.Qc4 Bd7 9.Bxc6 Bxc6

10.Nxe5 dxe5 11.Qxc5 ]

**8.Nxd4 Bxd4 9.Nd2 a6**