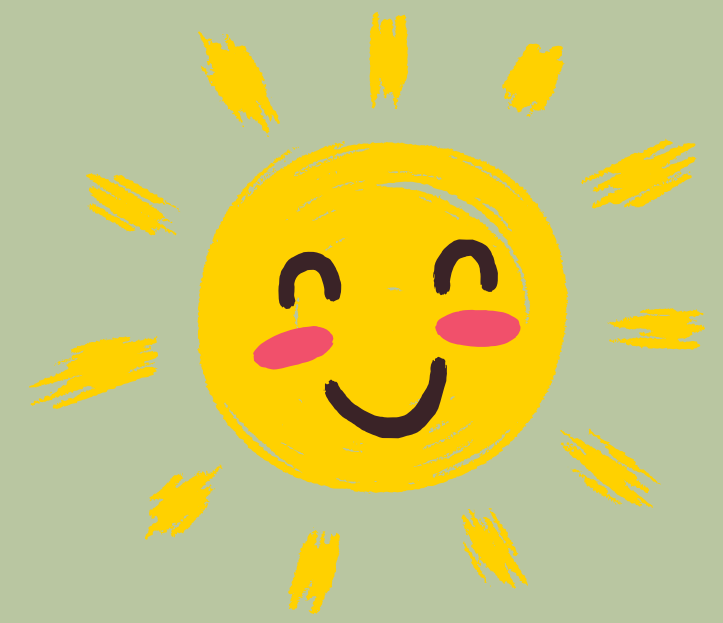


WEEKLY SCHEDULE



Teaneck: Mar 3 – May 18

MONDAY

5:00-6:00

BEGINNER - INTERMEDIATE

6:15-7:15

BEGINNER - INTERMEDIATE

6:15-7:45

RATED - ADVANCED

WEDNESDAY

5:00-6:00

BEGINNER - INTERMEDIATE

6:15-7:15

BEGINNER - INTERMEDIATE

6:15-7:45

RATED - ADVANCED

SUNDAY

10:00-11:00

BEGINNER - INTERMEDIATE

11:15-12:15

BEGINNER - INTERMEDIATE

12:30-2:00

RATED - ADVANCED



TUITION INFORMATION (Based on 10 classes)

We offer early bird and sibling discounts
Scan the QR Code for more information

